



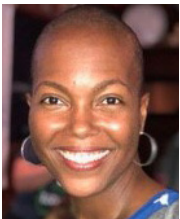
Elder Nominees



Bessie Green: Bessie Green joined Central Presbyterian Church on July 7, 2019. She had been formerly affiliated with St. James Presbyterian Church in Greensboro, N.C., Northeastern Presbyterian Church in Washington, D. C., and Radcliffe Presbyterian Church in Atlanta. She is a member of the Down Yonder Parish, volunteers at the Night Shelter, is a member of chancel choirs, Presbyterian Women, Volunteer Service Guild and Women's Circle Groups. She participates in community assistance projects as a member of the Atlanta Urban League Guild. She retired as Assistant Veterans Service Center Manager, Atlanta VA Regional Office. She is married to Rev. Dr. Lloyd Green, Jr., Retired.



Kathy Harben: Baptized as an adult at Central in 1984, Kathy Harben has served as an Elder and a member of Care for Creation and Local Mission ministries. She has volunteered for many years at the Central Night Shelter. She also has ushered, taught Sunday School, and driven the church van through the Open Door. Since retiring from the Centers for Disease Control and Prevention's media office in September 2019, she has served on the search committee for CPC's first communications director and recently began volunteering at the Outreach and Advocacy Center. She and her husband, James, live in Decatur Parish and enjoy hiking, traveling, and running with their dog, Oliver.



Khaliah Johnson: Khaliah Johnson joined Central in Spring 2017 and has been active in the church on the Global Missions Committee and as a board member with the Child Development Center. She received her medical degree from Stanford University and trained in general pediatrics at the Johns Hopkins Hospital. Her desire to serve children and families facing complex, life-threatening illness led her to pursue fellowship training in pediatric palliative care at the Children's Hospital of Philadelphia. Upon completing her fellowship in 2012, she joined the Pediatric Advanced Care Team at Children's Healthcare of Atlanta and Emory University's Department of Pediatrics, and spends part of her clinical time in the pediatric HIV clinic at Grady Medical Center. She has been involved in other outreach efforts including running the nonprofit initiative Children's Literature for Children, We are Wendo (www.wearewendo.com). She is the mother of a four-year-old son, Aubrey.



Susan Landrum: Susan Landrum joined Central in February 2010. She had previously been a member of Peachtree Presbyterian Church. Susan has been involved at Central in a variety of ways including teaching a high school Sunday school, serving on the Personnel Committee and serving as the chair of the Pastor Nominating Committee. Susan is also on the board of Charis Circle, the non-profit programming arm of Charis Books & More, the South's oldest feminist bookstore. She is the Executive Director of VOX ATL, a holistic after school youth-development program serving teens in Atlanta. She loves spending time with her family, friends, the teens she works with and her 17-year-old hound, Elvis.



Amy Mast: Amy Mast began attending Central in the mid-1990s and joined in the late-1990s before moving to Boston to attend graduate school in education policy. She then worked in Washington, D.C. before moving back to Atlanta in 2004 and renewing her membership at Central. Amy served as an elder in the Session class of 2009 and has served on the Local Mission Committee and on the Board of the Central Outreach & Advocacy Center (OAC). She served on Central's mission trip to Merida, Mexico with Living Waters for the World in 2006. Amy serves on the Global Mission Committee, and enjoys attending Central's Annual Retreats in Montreat and Taize services. She was raised in the First Presbyterian Church in Boone, N.C., attended New Garden Friends Meeting while at Guilford College, Harvard Memorial Church while in Boston, and Foundry United Methodist Church and New York Avenue Presbyterian Church while in Washington, D.C. Amy enjoys a wide circle of family members and close friends that include the Little family, five siblings she first met while tutoring at Benteen Elementary School over 20 years ago.



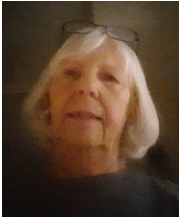
Matt Parrish: Matt Parrish was born and raised a Southern Baptist in Geraldine, Alabama. He attended Methodist services while a student at Birmingham-Southern College and attended services at the Riverside Church in New York City while in law school. Matt has previously worked with the sound team at Central for worship services. He is also an officer with The Rotary Club of Atlanta West End, which supports and provides service to the Atlanta West End community. A business litigator, Matt is married to Lindsey. The couple has two children.



Mike Sizemore: Mike Sizemore and his wife, Tina, have been members of Central for over 40 years. They have a married son and daughter. Mike has served on the Session twice. On the Administration Committee, he championed the Solar Hot Water system and the redesign of the Sanctuary. He has also been ushering for decades, served on the Invitation Committee and has been involved in numerous other committees. Mike is retired from Sizemore Group Architects and Planners. Mike was the Master Planner of the 1996 Olympic Games in Atlanta, architect for The Metro Atlanta Chamber of Commerce as well as the Town Centers of Smyrna and Riverdale.



Charles Yorke: Charles Yorke joined Central on Aug. 25, 2019. Charles is a member of the Central choir and serves as a youth advisor. Prior to joining Central, he was a member of Ebenezer Presbyterian Church in Rock Hill, S.C. and First Presbyterian Church in Charlotte, N.C. Charles is president of Paragon Bank Small Business Capital Group. He lives with his partner, Jeff Whitney.



Beth Webb-Woods: Beth Webb-Woods first experience with Central was as a sophomore at Emory University in 1968 as she drove people from the airport to the church which housed people for Martin Luther King Jr.'s funeral. Raised Methodist, she became a member at Central in 1975. She was the first director of the Child Development Center. She spent 30 years working at Sheltering Arms and was Executive Director at Clifton Childcare Center serving CDC, CHOA and Emory. Other activities at Central include helping open The Night Shelter, teaching Sunday School, serving as an Elder and as a member on the Community Ministry Council. In 1983, she married the late Dennis Woods. She has a son, Matthew, and a granddaughter.



Deacon Nominees



Ginger Heidbreder: Ginger Heidbreder has been a member of Central for 27 years and served as an Elder, Deacon, Parish Coordinator and Children's Development Center Board Chair. She has served on the preschool committee, youth committee, stewardship committee, and the pastor nominating committee that called Rev. Dr. Jessica Patchett. She is active in the Rebekah Circle and the Northern Lights Parish, and currently co-chairs the congregational life committee, co-teaches 3rd-5th grade Sunday School and serves on the children's committee. Ginger is a graduate student in the Gerontology Institute at GSU. She and her husband John have four grown sons.



Linda Graham Lehfeltdt: Linda Graham Lehfeltdt joined Central in 1969. She is a lifelong Presbyterian, the daughter of a Presbyterian minister and was born in Presbyterian Hospital in Charlotte. She has previously been elected as an Elder and a Deacon and chaired and served on the majority of the committees in the church. Presently, she is a long time-member of the chancel choir, volunteers at the Outreach and Advocacy Center, schedules session members to serve communion, and loves meeting with Central Women. Before retiring, she worked for the headquarters for both PCUS and the PCUSA, directed a refugee resettlement program, and worked at Columbia Theological Seminary.



Thomas C. (Tom) Leslie: Tom Leslie joined Central in 1979. He was raised in Decatur Presbyterian Church. His mother taught Sunday School for decades and his father was a deacon. At Central, Tom has served as an Elder on three separate occasions; served on Finance Committee three times and Chaired it for several years; served on the Personal Committee; Co-Chaired the annual stewardship committee while Buddy Enniss was Pastor and served on the Stewardship Committee twice subsequently; hosted at our house several stewardship dinners, Maundy Thursday services, and several Parrish dinners; volunteered for overnight service at the Nightshelter; more recently volunteered 4-5 times per year to pick-up food at the Atlanta Community Food Bank and deliver it to the OAC for distribution. Tom retired from a career in Civil Engineering. He and his wife, Mary, enjoy spending time with their grown children and grandchildren.



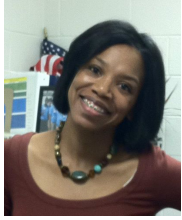
Amy Kirkland: Amy Kirkland has been a member of Central Presbyterian since September 2012. Amy grew up in Southern Baptist tradition, attended a Methodist church as a young adult, and eventually attending a UCC church in Decatur, where she met her wife, Cindi. Amy enjoys teaching Godly play Sunday School for the Kindergarten through 2nd grade age group and also serves on the Administration committee. She also enjoys spending time tending to the flowers and plant life around the church and in the memorial garden and has previously served as the Parish Coordinator for the Decatur Parish. In her spare time, she enjoys gardening, traveling, and spending time with her precious dogs, Tucker and Gibbs.



Brian Bishop: Brian Bishop joined Central in 1983 with his wife, Libby, although he had been attending the church and participating in Central Drama Troupe since 1981. He and Libby were junior high advisors. He also served in the Choir for ten years, is a former Elder, Member of the Associate Pastor Search Committee, Deacon, member of the Cozad South Atlanta Task Force and volunteers with Central men and the night shelter. A real estate agent, landlord and renovator, he also enjoys gardening, hunting, and fishing. He has three children and two grandsons.



Vicki Collier: Vicki Collier was raised in Davenport, Iowa and baptized into the Lutheran Church in America (LCA). She joined Central in 2006 and has been actively involved ever since, serving three terms on Session including as Ministry Coordinator for Music Worship and the Arts. She has describes, singing in the choir and her involvement in the Music Worship and Arts Committee as, "especially joyful experiences in my life." She has served as an usher, member of Congregational Events, coordinator of Parish Life, twice chaired the All-church Retreat Planning Committee and twice planned worship for the event, served on the Vision Committee, and have recently become a baker for Central's Courtyard Ministry. She and Rob Forbes co-chaired this past Stewardship Season. She is also an active participant in prayer groups, study groups, the Women's March on Washington, March for Our Lives hospitality, Bookworms and Women's Studies.



La Shawn M. Green: La Shawn joined Central in February 2020. She had been a member of Friendship Baptist Church and Antioch Missionary Baptist Church. At Central, she is involved in Sunday School, a member of Central Woman's Group and a recent member of the Congregational Events Group. She has also been involved in multiple outreach and nonprofit work including Antioch Clothing and Food Bank, Antioch Missionary Baptist Church, Habitat for Humanity, Friendship Young Adult Group, Friendship Deaconess and Friendship Sunday School. She is the mother of Amelia and Kenneth.